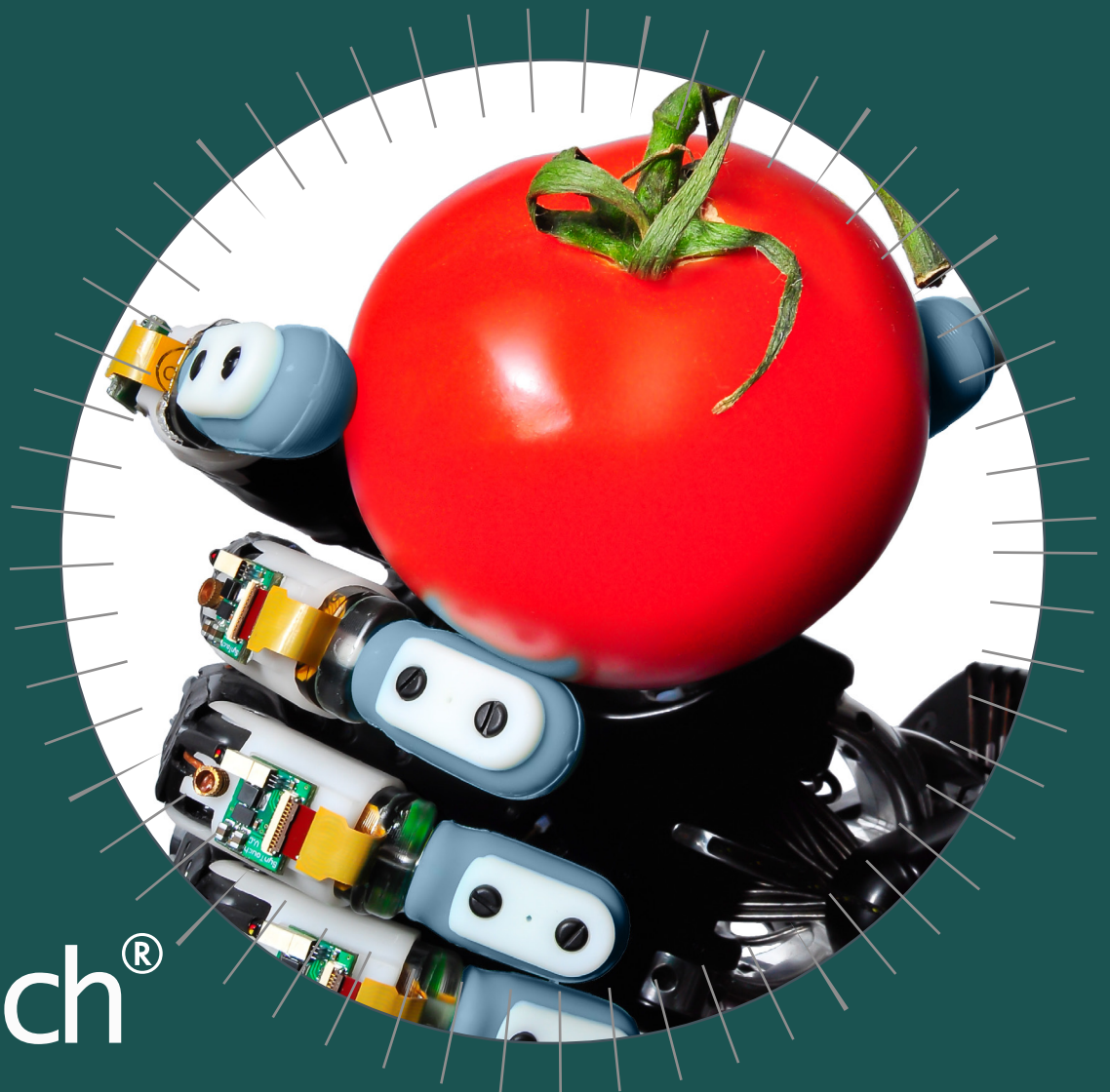


BioTac[®] Integration Kit

Shadow Hand[™]



syntouch[®]

The BioTac Integration Kit: Shadow Hand™ brings the most advanced tactile sensor to the advanced Shadow Hand. The Shadow Hand Integration kit includes the sensors and adapters seen below, plus the following accessory items (see Evaluation Kit for illustration).

Accessory Items:

Service Package
Support Package
Spare Skin (10)
Spare Nail (5)
Test Core (5)
Engineering Hours (10)

1.5" Wiring Harness (5)
12" Wiring Harness (1)
USB Info Card
Cheetah SPI-USB
Mult-BioTac-3 Board
5V Power Supply

Retail Price: See Website

